

A SURVEY:

STEM Jobs in West Virginia in 2015

October 2016



TECHCONNECT

WEST VIRGINIA

Produced in partnership with the



WEST VIRGINIA
DEPARTMENT of COMMERCE



TECHCONNECT

WEST VIRGINIA

A SURVEY: STEM Jobs in West Virginia in 2015

“Regardless of educational attainment, entering a STEM profession is associated with higher earnings and reduced joblessness.”

— U.S. Department of Commerce

Science, technology, engineering and mathematics (STEM) workers drive the economy through innovation and increased competitiveness by generating new industries, new companies, and new job opportunities.

In collaboration with the West Virginia Department of Commerce, TechConnect West Virginia compiled this report outlining the number of STEM-related jobs in West Virginia in 2015. It is designed to present a new portrait of the STEM economy in West Virginia and to encourage conversation about strategies and policies that will lay the foundation to increase the number of STEM occupations in the state. It also establishes a baseline for measuring future growth in STEM-related jobs.

STEM jobs are highly desirable because they pay higher than average wages, are more recession-proof, and are among the fastest growing sector of jobs across the nation. The Bureau of Labor Statistics reports that STEM workers command higher wages, earning 26 percent more than their non-STEM counterparts. From 2012 to 2022, the Bureau of Labor Statistics projects that STEM employment will grow approximately 13 percent compared to a projected total job growth rate of 11 percent. For example, software developers—both in applications and systems—are predicted to have more than 350,000 positions open up by 2022. These positions paid a median annual wage of \$97,035 in May 2013.

In its report, *The Hidden STEM Economy*, the Brookings Institution reports that half of all STEM jobs are available to workers without a four-year college degree, and these jobs pay \$53,000 on average—a wage 10 percent higher than jobs with similar educational requirements.

Executive Summary

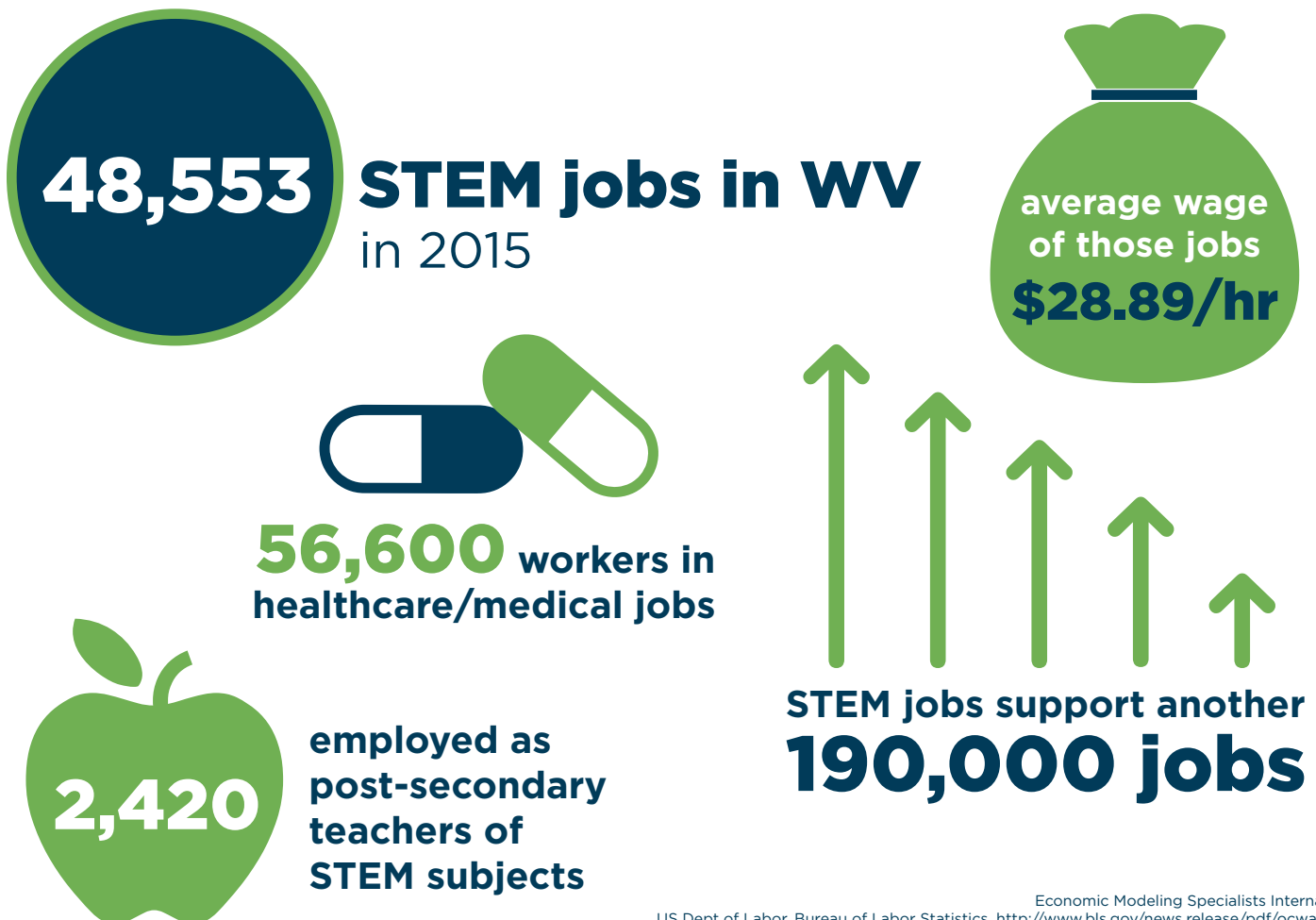
In 2015, West Virginia had 48,553 people working in STEM-related jobs. This represents 6.7 percent of the total number of jobs in that year—722,667.¹ Nationally, STEM jobs made up 6.2 percent of total employment in May.²

The survey found that West Virginia's **48,553** STEM economy jobs support another 190,000 jobs in the state and the average STEM job hourly wage in West Virginia is \$28.89 per hour.

While many of these jobs require a bachelor's, graduate and/or post-graduate degrees, others require less education, including one- and two-year degrees from community and technical colleges. It is important to not overlook the strong potential workforce of those with less than a four-year degree but substantial STEM skills. Sometimes called the "hidden STEM economy," these jobs are also critical to driving economic growth.

The common denominator is that in all of these jobs, workers use knowledge of science, technology, engineering and/or math to complete the tasks and duties of their jobs.

In addition to the 48,553 jobs identified in this survey, another 56,600 workers are employed in healthcare/medical jobs in the state, and yet another 2,420 workers are post-secondary teachers of STEM subjects.



Breakdown by STEM Discipline

| | |
|--|---------------|
| Computer Science, Computer Related, Information Security | 15,490 |
| Engineering | 15,481 |
| Chemistry | 5,822 |
| Other | 7,010 |
| Accountants & Auditors | 4,750 |
| TOTAL | 48,553 |

Conclusions

STEM jobs are the jobs of the future. Although still relatively small in number—both in West Virginia and the nation—the STEM workforce has an outsized impact on our nation’s competitiveness, economic growth, and overall standard of living. They are essential for developing technological innovation and global competitiveness.

One reason it is difficult to define who is and who is not in the STEM workforce is that technical proficiency is becoming mandatory in a diverse body of occupations. As an example, automation and innovation have changed American manufacturing, where computers and robots drive production. Digital proficiency is a requirement for a majority of middle-skill jobs that require a high school diploma, but not necessarily a four-year degree. Understanding and optimizing digital technologies across a variety of platforms will be even more important to the workforce of tomorrow.

Thousands of jobs that are not typically understood to be STEM jobs will require STEM capabilities, and in order for businesses to be successful, the workforce must be prepared if we are to remain competitive globally. As a state, we must consider sound policies that prepare our workforce and advance growth in these jobs.

Methodology

2015 data collected through the Occupation Information Network (O*Net) was evaluated and ranked by STEM discipline. O*Net, an initiative of the U.S. Department of Labor/Employment and Training Administration, is the nation’s primary source of occupational information. Central to the project is the O*NET database, containing information on hundreds of standardized and occupation-specific descriptors. The database, which is available to the public at no cost, is continually updated by surveying a broad range of workers from each occupation. Information from this database forms the heart of O*NET OnLine, an interactive application for exploring and searching occupations.

For purposes of this survey, occupations were included that require the following STEM disciplines: Life Sciences, Computer Science, Engineering, Chemistry, Environmental Science, Geosciences, Mathematics and Physics/Astronomy.

To determine the total number of jobs supported by the STEM occupations identified in this survey, the database of the Economic Modeling Specialists International (EMSI) was used.

Occupations by STEM discipline, 2015:

| Code | Occupation | STEM Disciplines | Occupational Group | In WV | Median Hourly Earnings |
|---------|---|-------------------------------|-------------------------------------|-------|------------------------|
| 13-2011 | Accountants & Auditors | | | 4,750 | \$26.38 |
| 35-1012 | First-Line Supervisors of Food Preparation & Serving Workers | Life Sciences | | 4,713 | \$11.83 |
| 35-2012 | Cooks, Institution & Cafeteria | Life Sciences | | 4,474 | \$10.07 |
| 49-3023 | Automotive Service Technicians and Mechanics | | | 4,462 | \$14.22 |
| 13-1199 | Business Operations Specialists, All Other | | | 3,078 | \$29.54 |
| 15-1199 | Computer Occupations, All Other | | | 2,015 | \$41.73 |
| 15-1151 | Computer User Support Specialists | Computer Science | Computer and Mathematics | 1,947 | \$19.53 |
| 11-9199 | Managers, All Other | | | 1,318 | \$36.23 |
| 15-1133 | Software Developers, Systems Software | Computer Science, Engineering | Computer and Mathematics | 1,287 | \$35.21 |
| 17-2051 | Civil Engineers | Engineering | Architecture and Engineering | 1,254 | \$32.44 |
| 13-1041 | Compliance Officers | | | 1,233 | \$22.66 |
| 51-9011 | Chemical Equipment Operators & Tenders | Chemistry | | 1,175 | \$27.37 |
| 15-1142 | Network & Computer Systems Administrators | | Computer and Mathematics | 949 | \$27.61 |
| 41-4011 | Sales Representatives, Wholesale and Manufacturing, Technical and Scientific Products | | Sales and Related | 855 | \$28.51 |
| 15-1121 | Computer Systems Analysts | Computer Science | Computer and Mathematics | 799 | \$32.33 |
| 15-1132 | Software Developers, Applications | Computer Science, Engineering | Computer and Mathematics | 793 | \$40.63 |
| 11-3021 | Computer & Information Systems Managers | Computer Science | Management | 749 | \$47.70 |
| 11-9021 | Construction Managers | Engineering | | 728 | \$39.76 |
| 15-1152 | Computer Network Support Specialists | Computer Science | Computer and Mathematics | 719 | \$21.11 |
| 13-1051 | Cost Estimators | Engineering | | 638 | \$26.86 |
| 19-3031 | Clinical, Counseling, and School Psychologists | | | 625 | \$23.25 |
| 19-2041 | Environmental Scientists & Specialists, Including Health | Environmental Science | Life, Physical, and Social Sciences | 588 | \$20.83 |
| 15-1131 | Computer Programmers | Computer Science | Computer and Mathematics | 587 | \$26.98 |
| 11-3051 | Industrial Production Managers | | | 581 | \$42.16 |

| Code | Occupation | STEM Disciplines | Occupational Group | In WV | Median Hourly Earnings |
|---------|--|---|-------------------------------------|-------|------------------------|
| 17-2071 | Electrical Engineers | Engineering | Architecture and Engineering | 517 | \$40.70 |
| 49-3011 | Aircraft Mechanics & Service Technicians | Engineering | | 504 | \$25.47 |
| 27-1024 | Graphic Designers | Computer Science | | 501 | \$18.03 |
| 17-2112 | Industrial Engineers | Engineering | Architecture and Engineering | 494 | \$39.50 |
| 13-2099 | Financial Specialists, All Other | | | 487 | \$27.07 |
| 51-8091 | Chemical Plant & System Operators | Chemistry | | 477 | \$27.85 |
| 17-2199 | Engineers, All Other | | Architecture and Engineering | 469 | \$40.73 |
| 17-3023 | Electrical and Electronics Engineering Technicians | | | 448 | \$24.23 |
| 45-4022 | Logging Equipment Operators | Life Sciences | | 442 | \$12.08 |
| 17-2141 | Mechanical Engineers | Engineering | Architecture and Engineering | 439 | \$36.61 |
| 15-1141 | Database Administrators | Computer Science | Computer and Mathematics | 430 | \$27.34 |
| 19-1020 | Biological Scientists | | | 429 | \$30.20 |
| 19-4031 | Chemical Technicians | Chemistry, Life Sciences | Life, Physical, and Social Sciences | 416 | \$22.00 |
| 17-1022 | Surveyors | | | 398 | \$24.12 |
| 17-3031 | Surveying & Mapping Technicians | | Architecture and Engineering | 387 | \$15.70 |
| 29-1031 | Dietitians & Nutritionists | Life Sciences | | 380 | \$26.23 |
| 11-9041 | Architectural & Engineering Managers | Chemistry, Computer Science, Engineering, Geosciences, Life Sciences, Physics/Astronomy | Management | 380 | \$55.87 |
| 17-3011 | Architectural and Civil Drafters | | | 370 | \$19.81 |
| 15-1143 | Computer Network Architects | Computer Science | Computer and Mathematics | 330 | \$34.56 |
| 29-2051 | Dietetic Technicians | Life Sciences | | 317 | \$10.98 |
| 17-3026 | Industrial Engineering Technicians | Engineering | Architecture and Engineering | 277 | \$25.77 |
| 17-2151 | Mining & Geological Engineers, Including Mining Safety Engineers | Engineering | Architecture and Engineering | 276 | \$31.62 |
| 17-2081 | Environmental Engineers | Engineering, Environmental Science | Architecture and Engineering | 275 | \$35.30 |
| 15-1134 | Web Developers | | Computer and Mathematics | 267 | \$21.45 |
| 19-2031 | Chemists | Chemistry, Physics/Astronomy | Life, Physical, and Social Sciences | 256 | \$30.32 |

| Code | Occupation | STEM Disciplines | Occupational Group | In WV | Median Hourly Earnings |
|---------|--|--|-------------------------------------|-------|------------------------|
| 19-4091 | Environmental Science & Protection Technicians, Including Health | Environmental Science | Life, Physical, and Social Sciences | 252 | \$18.14 |
| 17-3029 | Engineering Technicians, except Drafters, All Other | | Architecture and Engineering | 251 | \$28.12 |
| 19-4021 | Biological Technicians | Life Sciences | Life, Physical, and Social Sciences | 247 | \$16.00 |
| 17-2041 | Chemical Engineers | Chemistry, Engineering | Architecture and Engineering | 240 | \$51.30 |
| 19-4099 | Life, Physical, and Social Science Technicians, All Other | | | 231 | \$19.07 |
| 17-3022 | Civil Engineering Technicians | Engineering | Architecture and Engineering | 217 | \$20.69 |
| 17-3025 | Environmental Engineering Technicians | Engineering, Environmental Science | Architecture and Engineering | 215 | \$19.63 |
| 17-2171 | Petroleum Engineers | Engineering | Architecture and Engineering | 200 | \$47.02 |
| 17-2111 | Health & Safety Engineers, except Mining Safety Engineers & Inspectors | | Architecture and Engineering | 196 | \$31.83 |
| 11-9121 | Natural Sciences Managers | Chemistry, Computer Science, Engineering, Geosciences, Life Sciences, Mathematics, Physics/Astronomy | Management | 190 | \$45.37 |
| 19-4041 | Geological & Petroleum Technicians | | Life, Physical, and Social Sciences | 188 | \$26.80 |
| 29-2033 | Nuclear Medicine Technologists | Physics/Astronomy | | 180 | \$27.89 |
| 45-4023 | Log Graders & Scalers | Life Sciences | | 179 | \$14.80 |
| 19-1029 | Biological Scientists, All Other | | | 179 | \$34.63 |
| 17-2072 | Electronics Engineers, Except Computer | Engineering | Architecture and Engineering | 168 | \$41.32 |
| 15-2031 | Operations Research Analysts | Computer Science, Mathematics | Computer and Mathematics | 166 | \$28.06 |
| 15-1122 | Information Security Analysts | Computer Science | Computer and Mathematics | 164 | \$38.92 |
| 19-1042 | Medical Scientists, Except Epidemiologists | Life Sciences | Life, Physical, and Social Sciences | 163 | \$29.62 |
| 17-3013 | Mechanical Drafters | | Architecture and Engineering | 162 | \$23.80 |
| 19-4092 | Forensic Science Technicians | | Life, Physical, and Social Sciences | 151 | \$21.21 |
| 25-9021 | Farm & Home Management Advisors | Life Sciences | | 147 | \$21.42 |
| 17-1011 | Architects, Except Landscape & Naval | Engineering | | 146 | \$35.07 |
| 19-4093 | Forest & Conservation Technicians | Life Sciences | Life, Physical, and Social Sciences | 144 | \$16.54 |

| Code | Occupation | STEM Disciplines | Occupational Group | In WV | Median Hourly Earnings |
|---------|--|---|-------------------------------------|-------|------------------------|
| 45-4021 | Fallers | Life Sciences | | 141 | \$13.02 |
| 43-9111 | Statistical Assistants | | | 139 | \$20.76 |
| 17-2061 | Computer Hardware Engineers | Computer Science, Engineering | Architecture and Engineering | 138 | \$49.95 |
| 19-2042 | Geoscientists, Except Hydrologists & Geographers | Geosciences | Life, Physical, and Social Sciences | 137 | \$26.91 |
| 19-1032 | Foresters | Engineering, Life Sciences | Life, Physical, and Social Sciences | 126 | \$20.73 |
| 19-1023 | Zoologists & Wildlife Biologists | Life Sciences | Life, Physical, and Social Sciences | 122 | \$23.36 |
| 15-2041 | Statisticians | Life Sciences, Mathematics | Computer and Mathematics | 120 | \$25.49 |
| 41-9031 | Sales Engineers | | Sales and Related | 117 | \$40.16 |
| 53-6051 | Transportation Inspectors | | | 109 | \$30.02 |
| 11-9013 | Farmers, Ranchers, & Other Agricultural Managers | | | 92 | \$30.33 |
| 19-3039 | Psychologists, All Other | Life Sciences | | 91 | \$40.16 |
| 45-1011 | First-Line Supervisors of Farming, Fishing, and Forestry Workers | | | 88 | \$23.38 |
| 17-2131 | Materials Engineers | Engineering | Architecture and Engineering | 88 | \$40.30 |
| 19-1031 | Conservation Scientists | | Life, Physical, and Social Sciences | 83 | \$31.21 |
| 17-3027 | Mechanical Engineering Technicians | Engineering | Architecture and Engineering | 82 | \$22.97 |
| 51-3092 | Food Batchmakers | Life Sciences | | 81 | \$11.73 |
| 17-2011 | Aerospace Engineers | Engineering | Architecture and Engineering | 77 | \$48.02 |
| 45-4011 | Forest & Conservation Workers | Engineering, Life Sciences | | 76 | \$18.13 |
| 19-2032 | Materials Scientists | Engineering | Life, Physical, and Social Sciences | 69 | \$42.95 |
| 19-1021 | Biochemists & Biophysicists | Chemistry, Life Sciences, Physics/Astronomy | Life, Physical, and Social Sciences | 69 | \$36.15 |
| 19-1013 | Soil & Plant Scientists | Chemistry, Life Sciences, Physics/Astronomy | Life, Physical, and Social Sciences | 68 | \$24.92 |
| 19-2099 | Physical Scientists, All Other | | Life, Physical, and Social Sciences | 64 | \$38.60 |
| 17-3012 | Electrical & Electronics Drafters | | Architecture and Engineering | 60 | \$24.95 |
| 19-1022 | Microbiologists | Life Sciences | Life, Physical, and Social Sciences | 59 | \$24.19 |
| 19-1041 | Epidemiologists | Life Sciences | Life, Physical, and Social Sciences | 55 | \$25.62 |
| 17-2031 | Biomedical Engineers | Engineering | Architecture and Engineering | 50 | \$37.11 |
| 17-2161 | Nuclear Engineers | Engineering | Architecture and Engineering | 49 | \$42.85 |

| Code | Occupation | STEM Disciplines | Occupational Group | In WV | Median Hourly Earnings |
|---------|---|--------------------------------|-------------------------------------|-------|------------------------|
| 15-1111 | Computer & Information Research Scientists | Computer Science | Computer and Mathematics | 47 | \$45.30 |
| 51-2023 | Electromechanical Equipment Assemblers | Engineering | | 46 | \$15.38 |
| 19-4011 | Agricultural & Food Science Technicians | | Life, Physical, and Social Sciences | 45 | \$12.75 |
| 49-2091 | Avionics Technicians | Engineering | | 42 | \$24.89 |
| 51-4012 | Computer Numerically Controlled Machine Tool Programmers, Metal & Plastic | Computer Science | | 37 | \$20.44 |
| 15-2011 | Actuaries | Mathematics | Computer and Mathematics | 35 | \$32.78 |
| 19-2012 | Physicists | Mathematics, Physics/Astronomy | Life, Physical, and Social Sciences | 35 | \$48.97 |
| 19-2021 | Atmospheric & Space Scientists | Physics/Astronomy | Life, Physical, and Social Sciences | 31 | \$38.68 |
| 19-1012 | Food Scientists & Technologists | Life Sciences | Life, Physical, and Social Sciences | 28 | \$30.11 |
| 17-3024 | Electro-Mechanical Technicians | | | 27 | \$22.86 |
| 17-3019 | Drafters, All Others | | Architecture and Engineering | 27 | \$23.02 |
| 19-1099 | Life Scientists, All Other | | Life, Physical, and Social Sciences | 24 | \$32.06 |
| 33-3031 | Fish & Game Wardens | Life Sciences | | 23 | \$14.58 |
| 19-4051 | Nuclear Technicians | | Life, Physical, and Social Sciences | 20 | \$32.30 |
| 17-2021 | Agricultural Engineers | Engineering, Life Sciences | Architecture and Engineering | 19 | \$33.23 |
| 19-2043 | Hydrologists | Geosciences | Life, Physical, and Social Sciences | 19 | \$35.43 |
| 17-2121 | Marine Engineers and Naval Architects | | | 18 | \$31.66 |
| 49-9081 | Wind Turbine Service Technicians | Engineering | | 17 | \$23.50 |
| 17-3021 | Aerospace Engineering & Operations Technicians | Engineering | Architecture and Engineering | 16 | \$26.77 |
| 15-2021 | Mathematicians | Mathematics | | 12 | \$34.15 |
| 15-2091 | Mathematical Technicians | Mathematics | Computer and Mathematics | <10 | Insf. Data |
| 15-2099 | Mathematical Science Occupations, All Other | | Computer and Mathematics | <10 | Insf. Data |
| 19-1011 | Animal Scientists | Life Sciences | Life, Physical, and Social Sciences | <10 | Insf. Data |
| 19-2011 | Astronomers | Physics/Astronomy | Life, Physical, and Social Sciences | <10 | Insf. Data |
| 19-3032 | Industrial-Organizational Psychologists | Life Sciences | | <10 | Insf. Data |
| 45-2021 | Animal Breeders | Life Sciences | | <10 | Insf. Data |

| Code | Occupation | STEM Disciplines | Occupational Group | In WV | Median Hourly Earnings |
|--|---|-----------------------|-------------------------------------|---------------|------------------------|
| 45-3011 | Fishers & Related Fishing Workers | Life Sciences | | <10 | Insf. Data |
| | | | TOTAL | 48,553 | Avg: \$28.89 |
| Source: | Economic Modeling Specialists, Inc. | | | | |
| Potential Knowledge Providing Occupations | | | | | |
| 25-1021 | Computer Science Teachers, Postsecondary | Computer Science | Computer and Mathematics | 310 | NA |
| 25-1022 | Mathematical Science Teachers, Postsecondary | Mathematics | Computer and Mathematics | 240 | NA |
| 25-1032 | Engineering Teachers, Postsecondary | Engineering | Architecture and Engineering | 320 | NA |
| 25-1041 | Agricultural Sciences Teachers, Postsecondary | Life Sciences | Life, Physical, and Social Sciences | 40 | NA |
| 25-1042 | Biological Science Teachers, Postsecondary | Life Sciences | Life, Physical, and Social Sciences | 230 | NA |
| 25-1043 | Forestry & Conservation Sciences Teachers | Life Sciences | Life, Physical, and Social Sciences | 50 | NA |
| 25-1052 | Chemistry Teachers, Postsecondary | Chemistry | Life, Physical, and Social Sciences | 90 | NA |
| 25-1053 | Environmental Science Teachers, Postsecondary | Environmental Science | Life, Physical, and Social Sciences | 30 | NA |
| 25-1054 | Physics Teachers, Postsecondary | Physics | Life, Physical, and Social Sciences | 80 | NA |
| 25-1071 | Health Specialties Teachers, Postsecondary | Life Sciences | Life, Physical, and Social Sciences | 780 | NA |
| 25-1072 | Nursing Instructors & Teachers, Postsecondary | Life Sciences | Life, Physical, and Social Sciences | 250 | NA |
| | | | TOTAL | 2420 | |
| Source: WorkForce WV. Retrieved May 6, 2016. (Information not available through Economic Modeling Specialists, Inc.) | | | | | |

| SOC | Medical-Related Occupations in West Virginia | 2015 Jobs | Median Hourly Earnings |
|---------|---|-----------|------------------------|
| 29-1141 | Registered Nurses | 19,361 | \$26.92 |
| 29-2061 | Licensed Practical and Licensed Vocational Nurses | 6,603 | \$16.76 |
| 29-2052 | Pharmacy Technicians | 3,088 | \$12.47 |
| 29-1069 | Physicians and Surgeons, All Other | 2,661 | \$86.83 |
| 29-2041 | Emergency Medical Technicians and Paramedics | 2,512 | \$12.45 |
| 29-1051 | Pharmacists | 2,210 | \$59.58 |
| 29-2034 | Radiologic Technologists | 1,541 | \$22.19 |
| 29-2071 | Medical Records and Health Information Technicians | 1,345 | \$15.00 |
| 29-2053 | Psychiatric Technicians | 1,113 | \$9.60 |
| 29-1123 | Physical Therapists | 1,103 | \$38.21 |
| 29-2021 | Dental Hygienists | 1,056 | \$26.90 |
| 29-1071 | Physician Assistants | 1,024 | \$43.13 |
| 29-2011 | Medical and Clinical Laboratory Technologists | 995 | \$25.45 |
| 29-1126 | Respiratory Therapists | 928 | \$22.54 |
| 29-1127 | Speech-Language Pathologists | 907 | \$26.91 |
| 29-2012 | Medical and Clinical Laboratory Technicians | 892 | \$18.05 |
| 29-1171 | Nurse Practitioners | 757 | \$42.84 |
| 29-2055 | Surgical Technologists | 589 | \$17.70 |
| 29-1122 | Occupational Therapists | 544 | \$34.96 |
| 29-9011 | Occupational Health and Safety Specialists | 510 | \$36.41 |
| 29-1151 | Nurse Anesthetists | 498 | \$78.48 |
| 29-2099 | Health Technologists and Technicians, All Other | 471 | \$17.83 |
| 29-1062 | Family and General Practitioners | 452 | \$80.62 |
| 29-2081 | Opticians, Dispensing | 447 | \$13.19 |
| 29-2032 | Diagnostic Medical Sonographers | 419 | \$26.90 |
| 29-1021 | Dentists, General | 388 | \$73.72 |
| 29-1031 | Dietitians and Nutritionists | 380 | \$26.23 |
| 29-2031 | Cardiovascular Technologists and Technicians | 366 | \$17.46 |
| 29-2051 | Dietetic Technicians | 316 | \$10.94 |
| 29-2056 | Veterinary Technologists and Technicians | 315 | \$12.17 |
| 29-1131 | Veterinarians | 279 | \$36.43 |
| 29-1061 | Anesthesiologists | 237 | \$98.24 |
| 29-2035 | Magnetic Resonance Imaging Technologists | 190 | \$28.16 |
| 29-2057 | Ophthalmic Medical Technicians | 187 | \$14.80 |
| 29-2033 | Nuclear Medicine Technologists | 175 | \$27.89 |
| 29-1066 | Psychiatrists | 171 | \$68.08 |
| 29-2054 | Respiratory Therapy Technicians | 136 | \$20.95 |
| 29-1041 | Optometrists | 132 | \$43.32 |
| 29-1199 | Health Diagnosing and Treating Practitioners, All Other | 131 | \$32.26 |
| 29-9091 | Athletic Trainers | 128 | \$19.50 |
| 29-1181 | Audiologists | 124 | \$29.80 |
| 29-9012 | Occupational Health and Safety Technicians | 106 | \$22.64 |
| 29-9099 | Healthcare Practitioners and Technical Workers, All Other | 102 | \$21.50 |

| SOC | Medical-Related Occupations in West Virginia | 2015 Jobs | Median Hourly Earnings |
|---------|--|---------------|------------------------|
| 29-1124 | Radiation Therapists | 99 | \$31.84 |
| 29-1125 | Recreational Therapists | 92 | \$20.09 |
| 29-1067 | Surgeons | 90 | \$86.88 |
| 29-1065 | Pediatricians, General | 83 | \$37.87 |
| 29-2091 | Orthotists and Prosthetists | 74 | \$25.00 |
| 29-1064 | Obstetricians and Gynecologists | 67 | \$93.97 |
| 29-1063 | Internists, General | 61 | \$82.64 |
| 29-1129 | Therapists, All Other | 61 | \$24.54 |
| 29-1029 | Dentists, All Other Specialists | 30 | \$72.04 |
| 29-1128 | Exercise Physiologists | 23 | \$18.34 |
| 29-1023 | Orthodontists | 21 | \$86.74 |
| 29-1081 | Podiatrists | 20 | \$46.32 |
| 29-2092 | Hearing Aid Specialists | 19 | \$18.14 |
| 29-1022 | Oral and Maxillofacial Surgeons | 19 | \$93.81 |
| 29-1161 | Nurse Midwives | 19 | \$42.01 |
| 29-1024 | Prosthodontists | <10 | Insf. Data |
| 29-9092 | Genetic Counselors | <10 | Insf. Data |
| | TOTAL | 56,678 | \$29.74 |

For more information, please contact:

Anne Barth, Executive Director
 TechConnect West Virginia
info@techconnectwv.com
techconnectwv.org